

UPDATE FROM THE GOMA OYSTER COP

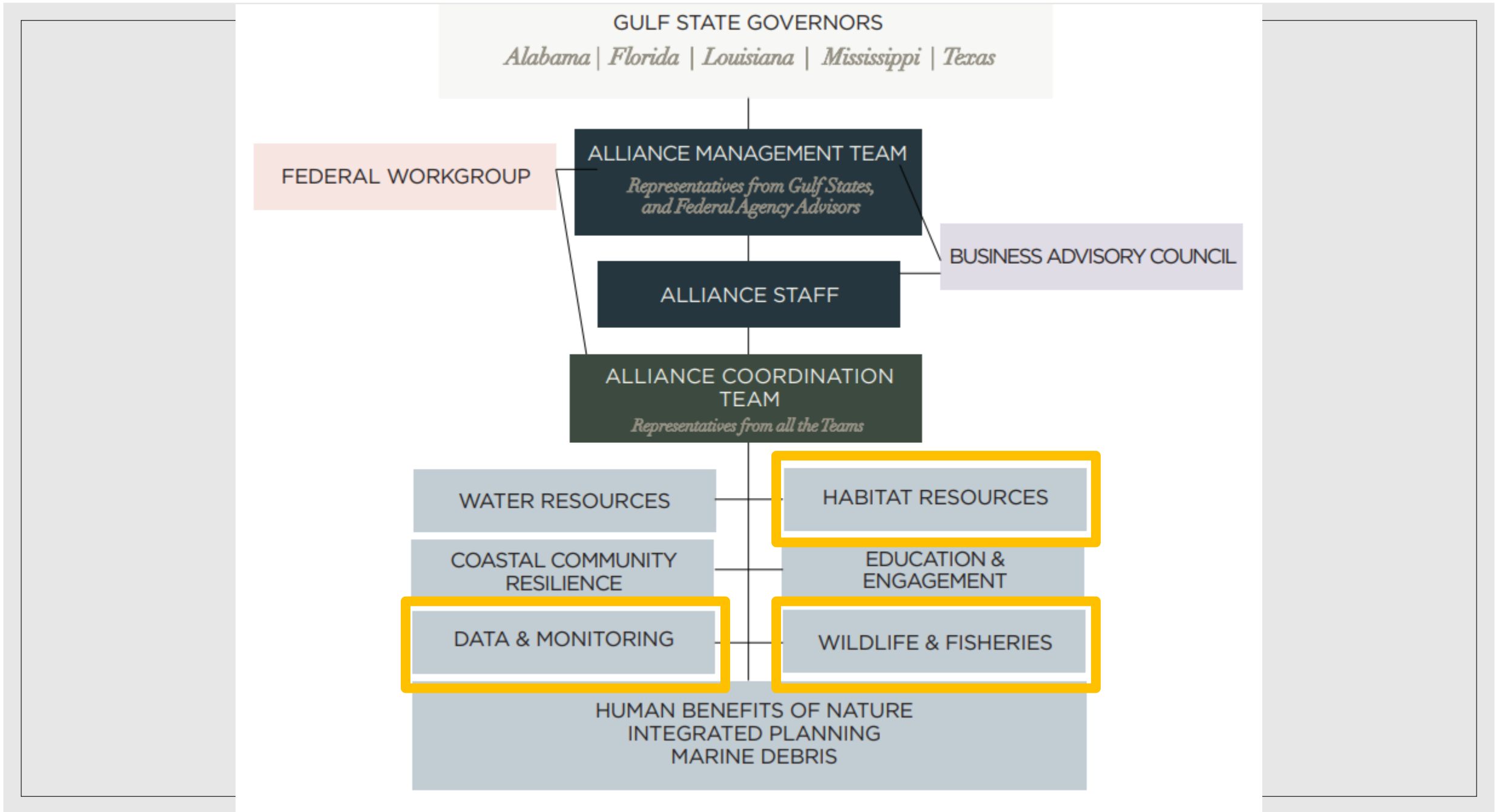
Dr. Emma Clarkson

Texas Parks and Wildlife Department

Gulf of Mexico Alliance (GOMA)



- Regional Ocean Partnership comprised of the 5 Gulf states with over 150 partner organizations and 1,000+ members
- The Governor's Action Plan (GAP) is updated and signed by each State's Governor every 5 years; directs the priorities and goals of the GOMA Workgroups
- GOMA Goals
 - Provide forums for collaboration
 - Develop and modify tools to address regional issues
 - Enable strategic partnerships
 - Track restoration efforts
- Regional Ocean Partnerships
 - Focus on issues that are priorities for the region
 - Are inclusive and provide a voice for a wide variety of stakeholders
 - Provide intentional and inclusive coordination and collaboration
 - Leverage public and private funding to accomplish common objectives



GULF STATE GOVERNORS

Alabama | Florida | Louisiana | Mississippi | Texas

FEDERAL WORKGROUP

ALLIANCE MANAGEMENT TEAM

*Representatives from Gulf States,
and Federal Agency Advisors*

BUSINESS ADVISORY COUNCIL

ALLIANCE STAFF

ALLIANCE COORDINATION
TEAM

Representatives from all the Teams

WATER RESOURCES

HABITAT RESOURCES

COASTAL COMMUNITY
RESILIENCE

EDUCATION &
ENGAGEMENT

DATA & MONITORING

WILDLIFE & FISHERIES

HUMAN BENEFITS OF NATURE
INTEGRATED PLANNING
MARINE DEBRIS

Governor's Action Plan IV

- Improve decision-making through coordination and provide guidance for monitoring, mapping, and data sharing collaborations (Data and Monitoring Team)
 - Gulf of Mexico Mapping Network
 - Gulf of Mexico Open Data Platform
- Coordinate information-sharing about habitat assessments of priority habitats (Habitat Resources Team)
 - Seagrass Community of Practice and Status and Trends documents
- Examples of successful projects
 - Living Shoreline Permitting process and BMPs
 - Living Shoreline suitability modeling for Tampa Bay, Mobile Bay
 - Monitoring Community of Practice and Data Inventory



Gulf of Mexico Open Data Platform

discover, explore, and access data for the Gulf of Mexico region

Welcome to the Gulf of Mexico Alliance's
Gulf of Mexico Open Data Platform (GOMOD)



GOMA Oyster Community of Practice

- Oyster Blueprint Workshop (2020)
 - Identified oyster data needs
 - Everyone wants an Oyster CoP!
- Oyster Data Inventory Workshop (2020)
 - Prioritized oyster data needs for incorporation into GOMOD
 - Everyone wants an Oyster CoP!
- GOMA Mid -Year Oyster CoP Planning meeting (2021)
 - Everyone still wants an Oyster CoP!
 - Formed a Steering Committee
 - Set direction for future meetings
 - Prioritized list of goals and projects

GOMA Oyster Community of Practice

Steering Committee

- Dr. Emma Clarkson (chair), TPWD
- Seth Blitch (TNC)
- Dr. Jennifer Pollack (Harte Research Institute/TAMU-CC)
- Chad Hanson (PEW)
- Ryan Moyer (FWC)
- Christina Mohrman (GOMA)

Inaugural Meeting Content

- What is a CoP?
- What other collaborative efforts are there for oysters in the GOM?
- Direction-setting - prioritization of future webinars and topics
- Mapping - Introduction to GOMOD and AGO
- Mapping Discussion
 - Goal of populating the GOMOD
 - What datasets should be included?
 - What metadata should be displayed?
 - Who has the data??
- Policy Discussion
 - Goal of compiling a document of relevant policy
 - What policies help/hinder oyster restoration?

Mapping Discussion

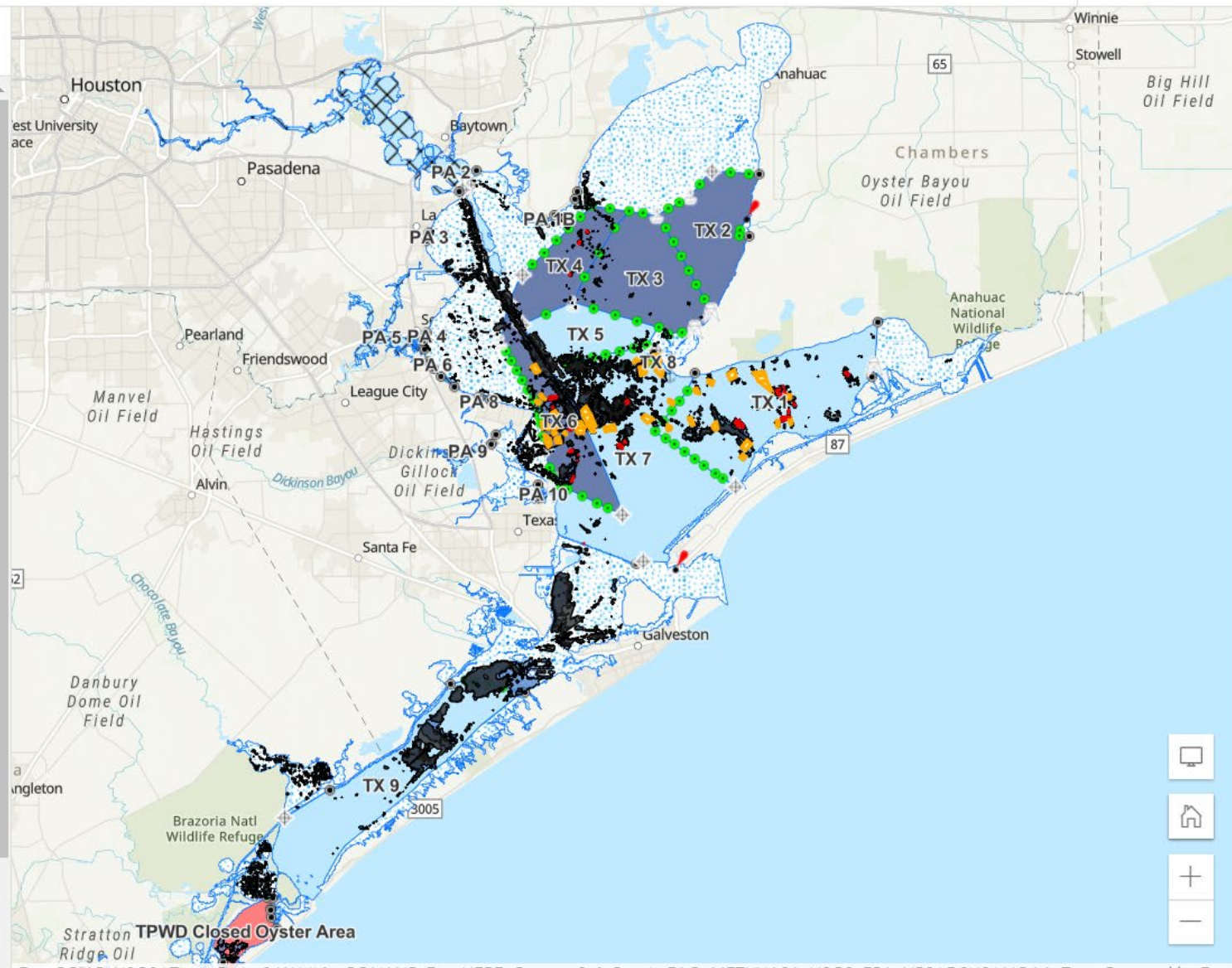
- Next steps for the GOMOD
 - Oyster presence data
 - ALL oyster presence - Natural, restored, mariculture (off and on)
 - Current and historical (up to a point!)
 - "Closure areas" merits further discussion
 - Temporally variable closures? Health closures? Conservation closures?
 - Minimum metadata required for inclusion:
 - Year, source, survey method, layer type (natural, restored, etc.)

- + Add
- Layers
- Tables
- Basemap
- Charts
- Legend
- Bookmarks
- Save and open
- Map properties
- Share map
- Create app
- Print
- Information
- << Collapse

Layers

- TPWD Oyster Restoration Sites
- Private Oyster Leases 2018 - PrivateOysterLeases2018
- ▼ Oyster Habitat Presence
 - Oyster Habitat: Galveston Bay TPWD 2008-2016
 - Oyster Habitat Copano Bay TPWD 2015
 - Oyster Habitat: West Galveston Bay TPWD 2016
 - Oysters Lower Coast NOAA Benthic Atlas 2004
 - Oyster Habitat: Galveston, Powell 1995
- ▼ Texas DSHS Shellfish Harvest Areas and Markers 2021 Feature layer
- Texas DSHS Shellfish Markers 2021

+ Add layer



- Properties
- Styles
- Processing templates
- Image display order
- Filter
- Effects
- Clustering
- Configure pop-ups
- Configure fields
- Labels
- More
- Add sketch
- Map tools
- >> Collapse

Policy Discussion

- Two *main* issues: protection from harvest & permitting
- Protection from Harvest
 - Barrier is not necessarily regulatory (most states have statutory authority (?), but rather based on decisions at state agency or commission level)
 - States utilizing health department closure areas to provide protection (sometimes discouraged)
 - Self-policing cultch in Texas, exploring that option in Florida
 - Wouldn't work with diver harvest
- Permitting
 - Challenges created from inconsistency with COE permitting, delayed timelines, and T&E habitat
 - Perspective - reminded of the importance of T&E habitat - it's not just red tape!
 - NMFS provides guidance and encourages pre-coordination
 - Guidance documents (NMFS) and state BMPS
 - Opportunity to collaborate and share resources
 - Potential task for COP - Compile these guidance resources

What do we hope to gain from the CoP

- Information exchange and collaboration for oyster management
- Understanding and sharing habitat types, comparing across region
- Knowledge co-production -> informing best practices
- Regulation and program updates together in one place
- Mapping data products and accessibility
- Restoration “lessons learned”
- Fisheries management “lessons learned”

Next Steps

- Oyster Restoration “Lessons Learned” webinar
 - Mapping for Oyster Restoration meeting planned for GOMA Mid-Year meetings Jan 31/Feb 1
- Technical guidance webinar series
- Policy summaries
- Moving forward
 - Structure?
 - Sub-Workgroups and leads?
 - Funding?
 - Outreach materials to increase membership? Regular email blasts to keep community engaged?
 - Opportunity to collaborate with CERF

Interfacing with GSMFC

- Very similar content
- Priorities are dependent on community
 - GOMA focus on communication and collaboration, but also on leveraging funding for tool creation, data sharing, webinars, etc.

Questions?

- Christina Mohrman
 - Christina.Mohrman@gomxa.org
- Emma Clarkson
 - Emma.Clarkson@tpwd.Texas.gov